

DVS-NMS

SNMP MANAGER

DVS-NMS is a simple and robust network management software for comprehensive management of SNMP based networks. It is based on SNMPv2 protocol and is very useful in managing any kind of SNMP complaint IP Routers (having Ethernet, xDSL, ISDN, dialup modem or frame relay ports), Managed hubs/switches or infact any SNMP complaint managed entity.

Architecture

DVS-NMS system has got two distinct modules - DVS-NMS Server and DVS-NMS Client. This division is done so that core SNMP part of the software is independent of the user interface.

DVS-NMS Server

This piece of software communicates with the different SNMP agents. It collects up the information from the SNMP agents and then sends this information to DVS-NMS Client based on users query.

DVS-NMS Client

This module provides a user friendly front end and communicates with the DVS-NMS Server using a TCP/IP based messaging interface.

Product Requirements

- DVS-NMS runs on any Windows 95/98/NT/2000 or Linux Based machines with properly configured TCP/IP. As client is JAVA based so it needs JAVA Runtime Environment.
- Pentium CPU with 64 MB RAM.

Features

SNMP version 1 and version 2 compliant.
Very simple upgradation path to all coming SNMP versions.

Runs on Win95/98/2000

/NT and Linux machines.

Auto discovery of Network topology.

User friendly way to draw the network diagram

Network Survey to determine which elements are UP/Down.

MIB Browser

MIB Editor

Supports all standard MIBs defined in MIB-2. It include MIBs for xDSL, ATM Frame Relay, IP etc.

Adding a new MIB to the software is a minute job.

Listens to SNMP TRAPS

Inbuilt Network Tools.

APPLICATIONS

- To discover the elements of a network.
- To determine which network elements are UP/Down at any given time in the network.
- To Browse the MIB of different agents in the network.
- To Set the value of a MIB variable after proper authentication.
- To receive the traps generated by agents in the network and analyze the details and time of this trap.
- Network Tools for testing network performance etc.

Product Details:

1) Network Auto discovery:

This module auto discovers the network and gives very significant information to network manager regarding different hosts, routers, logical segments and workgroups present in the network and their network topology. Network Manager can draw the auto discovered network in very selective style, i.e. he can select the network elements of his interest and the DVS-NMS draws them exactly as they are connected.

2) Drawing and Saving Network diagram:

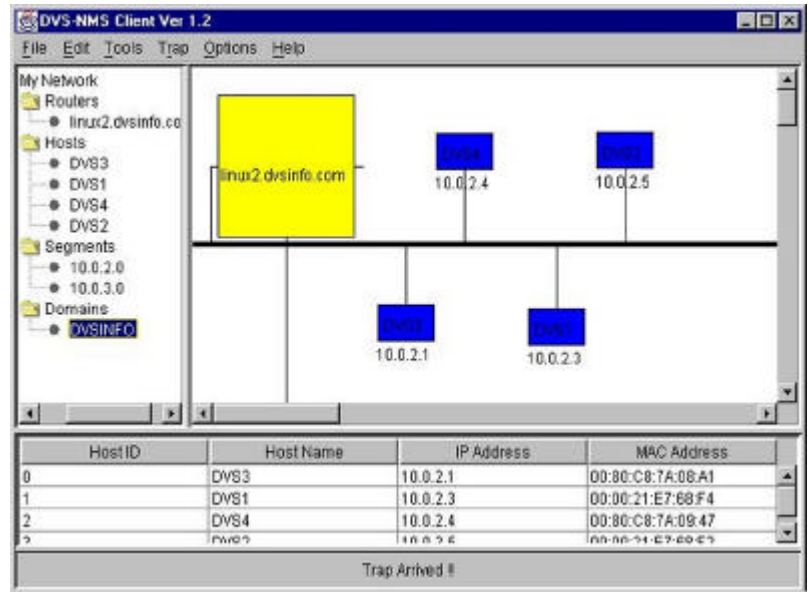
A drawing canvas is provided to the user on which the user can draw various network elements to be managed. User can save this network diagram to server in form of file to be reloaded later.

3) Network Survey

The network diagram can be surveyed in order to check whether the network elements are up or down

3) SNMP MIB Browser (GET)

DVS-NMS can be used to browse (SNMP GET feature) the MIB in a hierarchical way, like Microsoft Windows Explorer. It generates a tree of MIB objects, which can then be browsed by the user. User can browse the tree by single clicking on a node. If the node is a leaf node, it shows its current value in a panel besides the tree. Similarly if the node is a table, then it shows the whole table in the panel. If the node is not a leaf node it will expand the tree to



View of Network after Auto discovery.

The screenshot shows the MIB Browser of linux2.dvsinfo.com[10.0.2.2] interface. The left pane shows a tree of MIB objects, with 'tcpConnTable' selected. The right pane displays a table with the following data:

tcpConnState	tcpConnLocalAdd...	tcpConnLocalPort	tcpConnRem
2	0.0.0.0	13	0.0.0.0
2	0.0.0.0	21	0.0.0.0
2	0.0.0.0	23	0.0.0.0
2	0.0.0.0	25	0.0.0.0
2	0.0.0.0	79	0.0.0.0
2	0.0.0.0	80	0.0.0.0
2	0.0.0.0	98	0.0.0.0
2	0.0.0.0	110	0.0.0.0
2	0.0.0.0	111	0.0.0.0
2	0.0.0.0	113	0.0.0.0
2	0.0.0.0	139	0.0.0.0
2	0.0.0.0	143	0.0.0.0
2	0.0.0.0	513	0.0.0.0
2	0.0.0.0	514	0.0.0.0
2	0.0.0.0	645	0.0.0.0
2	0.0.0.0	1024	0.0.0.0
2	0.0.0.0	3306	0.0.0.0
5	10.0.2.2	23	10.0.2.1

MIB BROWSER

one more branch and user can browse it further in similar way

4) SNMP SET

Using MIB Object Editor user can issue SNMP set command to any writable SNMP object and change its values. But the modification of MIB objects value can be done only after proper authentication.

5) MIBs addition

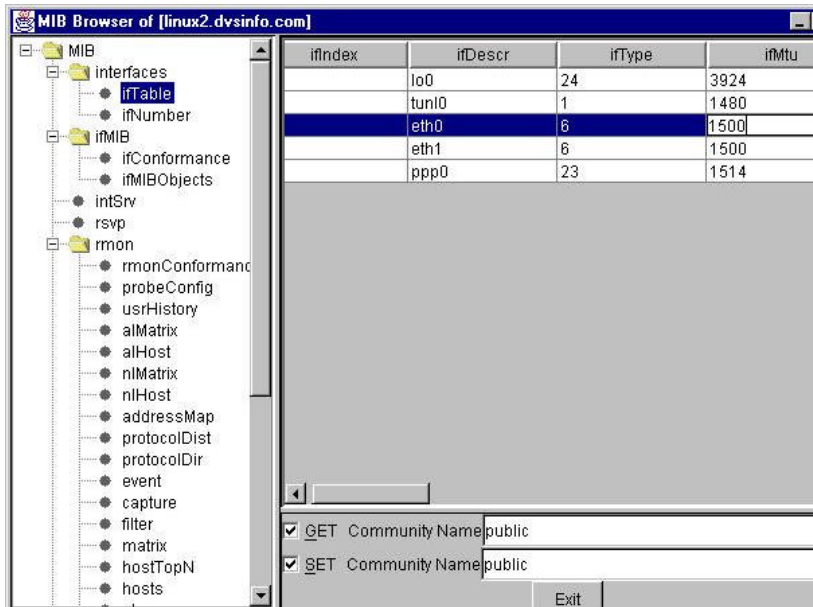
New MIBs can be added very easily. Just get the SMI of the desired MIB and append it to a text file.

6) SNMP TRAPS

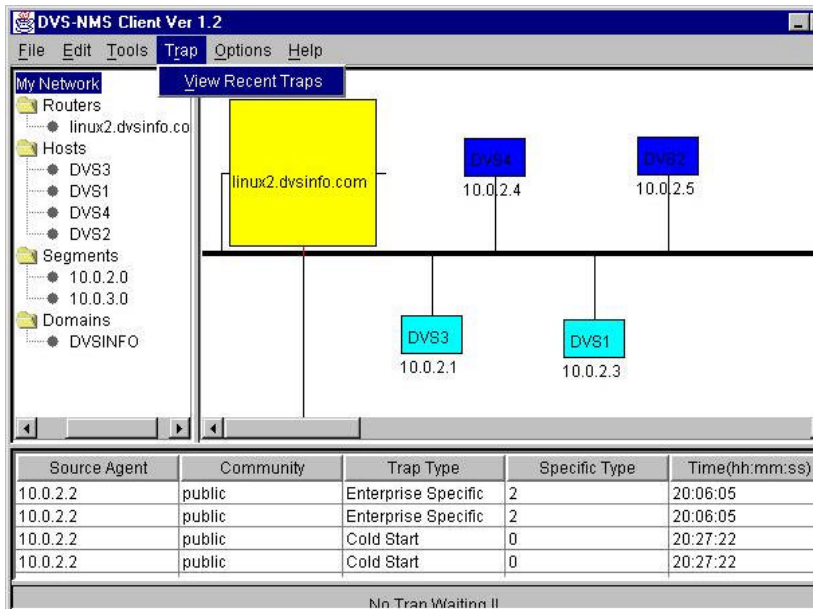
DVS-NMS listens for SNMP-TRAPS messages and keeps the Network Manager updated of each critical event that is happening in his network. This critical event includes Link up/ down, cold/warm start of SNMP compatible agent of network. By using MIB browser and MIB editor feature of DVS-NMS network manager can take appropriate action against the malfunctioning agents.

7) Network Tools

DVS-NMS is armed with network tools like Ping, which provides various options to the Network manager to test performance of his network.



SNMP SET



SNMP TRAP

Summary:

DVS-NMS is user friendly, feature-rich and affordable software that provides the needed management of SNMP based network elements. The software provides SNMP GET, SET and TRAP & auto discovery feature. The easy graphical interface allows a quick start for both the novice user and the experienced network professional.

Contact Information

DVS Informatics Pvt. LTD
31 Electronics Complex,
Indore, MP – 452010
INDIA.

Tel: +91-731-230024/230380/552560/261276

Fax: +91-731-272058

Email: inquiry@dvsinfo.com

URL: www.dvsinfo.com